

BARCO®

FALL 2024

gary's

WORKWEAR



New COLLECTION

SKECHERS

Slip-ins

SCRUBS

by Barco™

El círculo azul señala los colores de los productos que tenemos en stock.
El resto de artículos pueden pedirse con otras condiciones.

BARCO BRANDS

GREY'S ANATOMY™ BY BARCO



Spandex Stretch



Soil Release



Extreme Comfort



Moisture Wicking

❖ NOT SOLD ON AMAZON



Spandex Stretch



Soil Release



Extreme Comfort



Moisture Wicking

❖ NOT SOLD ON AMAZON



Wrinkle Release



360° Spandex Stretch



Recycled Polyester Blend



Moisture Wicking

❖ NOT SOLD ON AMAZON



All-Day Freshness



Easy Care



Super-Soft Touch



Moisture Wicking

BARCO®



5 Recycled Bottles Per Garment



4-Way Stretch



Anti Static



Moisture Wicking



PERFORMANCE KNIT



5 Recycled Bottles Per Garment



4-Way Stretch



Super-Soft Touch



Moisture Wicking



Wrinkle Release



360° Spandex Stretch



Super-Soft Touch



Moisture Wicking

❖ NOT SOLD ON AMAZON

SKECHERS™ BY BARCO



Eco-Friendly Fabric



4-Way Stretch



Comfort Included



Moisture Wicking

❖ NOT SOLD ON AMAZON



360° Spandex Stretch



Extreme Comfort



Moisture Wicking

❖ NOT SOLD ON AMAZON

TABLE OF CONTENTS

06	SKECHERS™ BY BARCO
18	GREY'S ANATOMY™ BY BARCO SPANDEX STRETCH
28	GREY'S ANATOMY™ BY BARCO IMPACT
30	GREY'S ANATOMY™ BY BARCO EVOLVE
36	GREY'S ANATOMY™ BY BARCO
42	BARCO® ONE
54	BARCO® UNIFY
58	LAB COATS



ON THE COVER

NEW SKECHERS SLIP-INS™ SCRUBS BY BARCO

Women's - SKT221 Flow Top & SKP656 Glide Pant

Men's - SKT229 Flow Top & SKP659 Rebound Pant

barcomade.com

Marketing, Simplified.

EXPLORE BARCO'S DIGITAL MARKETING RESOURCE CENTER



To access, scan the
QR CODE or login to
B2B.BARCOUNIFORMS.COM



MAP DATES 2024

Nurses Appreciation Week

May 1 - May 15

Summer Promotion

July TBD

Customer Appreciation Sale

August 2 - August 12

Black Friday & Cyber Monday

November 27 - December 6

During these periods, retailers may advertise Barco Brands at up to 20% off MAP.

HOW TO MEASURE

Take all measurements over undergarments using standard measuring tape held in a relaxed straight line.

Chest/Bust: Place measuring tape under the arms to measure the distance around the shoulder blades and the fullest part of the bust/chest. Do not hold the tape too tight.

Waist: Place measuring tape around the natural waistline.

Hip: Stand with feet a few inches apart and measure around the fullest part of your hips wearing your undergarments.

Inseam: Measure from the crotch to the desired length of the pant, breaking at the top of the shoe and just above the heel in the back. Appropriate shoes should be worn.



FIT SIZE GUIDE

BASED ON YOUR BODY MEASUREMENTS

Women's/Underscrubs/Lab Coats													
Size	XXS	XS	S	M	L	XL	2XL	3XL	4XL	5XL			
	00	0-2	4-6	8-10	12-14	16-18	20-22	24-26	28-30	32-34			
Bust	31-32	33-34	35-36	37-39	40-42	43-45	46-48	50-52	54-56	58-60			
Waist	23½-24½	25½-26½	27½-28½	29½-31½	32½-34½	35½-37½	39-41	43-45	47-49	51-53			
Hip	34-35	36-37	38-39	40-42	43-45	46-48	49-51	53-55	57-59	61-63			
Men's/Underscrubs													
Size	XXS	XS	S	M	L	XL	2XL	3XL	4XL	5XL			
	29-31	32-34	35-37	38-40	42-44	46-48	50-52	54-56	58-60	62			
Chest	30-32	33-35	36-38	39-41	43-45	47-49	51-53	55-57	59-61	63-65			
Waist	23½-25½	26½-28½	29½-31½	32½-34½	36½-38½	40½-42½	44½-46½	48½-50½	52½-54½	56½-58½			
Hip	30½-31½	33½-34½	36½-37½	38½-40½	42½-44½	46½-48½	49-51	53-55	57-59	61-63			
Men's Lab Coats													
Size	32	34	36	38	40	42	44	46	48	50	52	54	56
Chest	32	34	36	38	40	42	44	46	48	50	52	54	56
Waist	26	28	30	32	34	36	38	40	42	44	46	48	50



New
COLLECTION
SHOWN IN

2396 Deep Magenta

SKECHERS
Slip-ins
SCRUBS
by Barco™

PRIMARY FABRIC CONTENT
86% Nylon | 14% Spandex

SKT229 Flex Top **NEW**
SKP659 Rebound Pant **NEW**



SKT221 Flow Top **NEW**
SKP656 Glide Pant **NEW**



SKT221 Flow Top **NEW**



SKT229 Flex Top **NEW**
SKP659 Rebound Pant **NEW**



SKECHERS
Slip-ins
 SCRUBS
 by Barco™

SKT220 Serene Top NEW

3-pocket gusset v-neck, front princess seams with on-seam zipper pocket, angled top-entry patch waist pockets, shoulder Steel badge loop, tulip hem top
 Sizes: XXS - 5XL, CB:25.5"
 Color shown: 2396 Deep Magenta



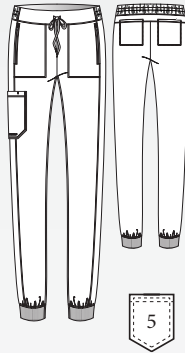
SKT221 Flow Top NEW

1-pocket banded curved v-neck, chest patch pocket, front and back princess seams, shoulder Steel badge loop, tulip hem top
 Sizes: XXS - 5XL, CB:25.5"
 Color shown: 18 Pewter



SKP669 Pace Jogger NEW

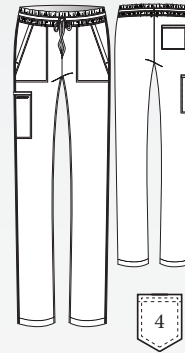
5-pocket encased elastic waistband with drawcord, on-seam zipper front pockets with shadow top stitching, patch cargo pocket with pen slot, ribbed cuff jogger
 Sizes: XXS-5XL, I: 29"
 XXSP-2XLP, I: 27"
 XST-XLT, I: 31"
 Leg Opening: 4.25"
 Color shown: 41 Navy



MID-RISE
 JOGGER LEG

SKP668 Reach Pant NEW

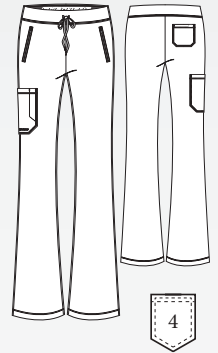
4-pocket shirred elastic waistband with tunneled drawcord, slanted front pockets with shadow top stitching, welt cargo and welt back pocket, slim straight pant
 Sizes: XXS-5XL, I: 31"
 XXSP-2XLP, I: 29"
 XST-XLT, I: 33.5"
 Leg Opening: 7.75"
 Color shown: 01 Black



STRAIGHT LEG

SKP656 Glide Pant NEW

4-pocket flat waistband with drawcord and inside logo elastic, angled zipper front pockets, patch cargo pocket with pen slot, back patch pocket, fit & flare pant
 Sizes: XXS-5XL, I: 31.5"
 XXSP-2XLP, I: 29.5"
 XST-XLT, I: 33.5"
 Leg Opening: 9.375"
 Color shown: 2396 Deep Magenta



MID-RISE
 FLARE LEG

- 01 Black
 - 18 Pewter
 - 41 Navy
- 2396 Deep Magenta

- 01 Black
 - 18 Pewter
 - 41 Navy
- 2396 Deep Magenta

- 01 Black
 - 18 Pewter
 - 41 Navy
- 2396 Deep Magenta

- 01 Black
 - 18 Pewter
 - 41 Navy
- 2396 Deep Magenta

- 01 Black
 - 18 Pewter
 - 41 Navy
- 2396 Deep Magenta

All Styles Main Fabric
 86% Nylon/14% Spandex

❖ NOT SOLD ON AMAZON

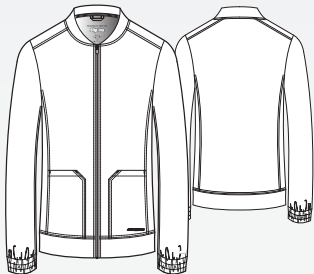


SKECHERS
Slip-ins
 SCRUBS
 by Barco

SKW919 Contour Warm-Up NEW

3-pocket banded collar, top-entry waist pockets, inside left front pocket, self waistband, encased elastic cuffs, zip-front warm-up

Sizes: XS - 5XL, CB: 23"
 Color shown: 18 Pewter

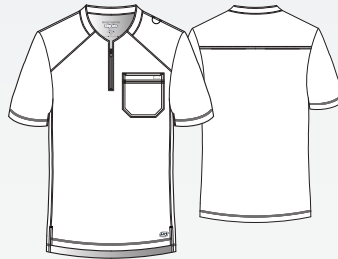


- 01 Black
- 18 Pewter
- 41 Navy

SKT229 Flex Top NEW

1-pocket curved banded neck with front zipper, chest patch pocket, shoulder badge loop, straight high-low hem top

Sizes: XS - 5XL, CB: 29"
 Color shown: 18 Pewter

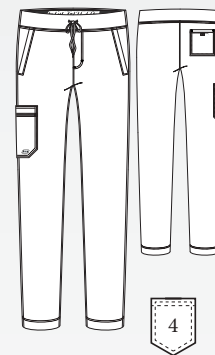


- 01 Black
- 18 Pewter
- 41 Navy

SKP659 Rebound Pant NEW

4-pocket flat waistband with drawcord and inside logo elastic, slanted front pockets, patch cargo pocket, back patch pocket with velcro closure, slim straight pant

Sizes: XS-5XL, I: 32"
 XSS-XLS, I: 30"
 ST-XLT, I: 34"
 Leg Opening: 7.25"
 Color shown: 41 Navy



STRAIGHT LEG

- 01 Black
- 18 Pewter
- 41 Navy

❖ NOT SOLD ON AMAZON

All Styles Main Fabric
 86% Nylon/ 14% Spandex



New FALL Color

2409 Light Jade

SKECHERS
by Barco™

THE COMFORT TECHNOLOGY COMPANY

PRIMARY FABRIC CONTENT

54% Polyester | 40% Recycled Polyester | 6% Spandex

SK101
Breeze Top



SK201
Reliance Pant



SKP552
Theory Jogger



SKT147
Dignity Tuck-In Top



SKT147 Dignity Tuck-In Top

1-pocket, V-neck with contrast rib, front yoke seam with badge loop, single chest pocket, high-low hem tuck-in top

Sizes: XXS - 5XL, CB: 26"
Color shown: 2409 Light Jade

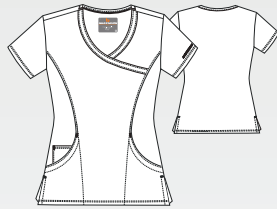


01 Black	G
08 New Royal	G
10 White	G
18 Pewter	G
37 Hunter	G
39 Teal	G
40 Ciel	G
41 Navy	G
65 Wine	G
/	
328 Bahama	G
471 Moonstruck	G
503 Galaxy	G
/	
1277 Eggplant	7/1
/	
2301 Vibrance Pink	G
2409 Light Jade	7/1

SK102 Reliance Top

3-pocket, V-neck surplice with front princess seams, side vent detail, contrast back neck binding

Sizes: XXS - 5XL, CB: 25.5"
Color shown: 1277 Eggplant



01 Black	G
08 New Royal	G
10 White	G
18 Pewter	G
37 Hunter	G
39 Teal	G
40 Ciel	G
41 Navy	G
65 Wine	G
230 Khaki	G
328 Bahama	G
/	
503 Galaxy	G
1276 New Grape	G
1277 Eggplant	G
1295 True Red	G
/	

SK101 Breeze Top

3-pocket, virtual V-neck, shaped hem, detailed cover stitching, contrast back neck binding

Sizes: XXS - 5XL, CB: 25.5"
Color shown: 328 Bahama



01 Black	G
08 New Royal	G
10 White	G
18 Pewter	G
37 Hunter	G
39 Teal	G
40 Ciel	G
41 Navy	G
65 Wine	G
230 Khaki	G
328 Bahama	G
471 Moonstruck	G
503 Galaxy	G
1276 New Grape	G
1277 Eggplant	G
1295 True Red	G
2301 Vibrance Pink	G
2409 Light Jade	7/1

SK401 Stability Warm-Up

2-pocket, round neck, snap front closure, dyed-to-match seamless knit sock cuff sleeves, contrast back neck binding

Sizes: XS - 5XL, CB: 27"
Color shown: 417 Moonstruck



01 Black	G
08 New Royal	G
10 White	G
18 Pewter	G
37 Hunter	G
39 Teal	G
40 Ciel	G
41 Navy	G
65 Wine	G
230 Khaki	G
328 Bahama	G
471 Moonstruck	G
503 Galaxy	G
1276 New Grape	G
1277 Eggplant	G
1295 True Red	G
2301 Vibrance Pink	G
/	

Seamless Cuff: 100% Polyester

All Styles Main Fabric
54% Polyester/40% Recycled Polyester/6% Spandex

❖ NOT SOLD ON AMAZON

G denotes colors supported for Groups



SKP552 Theory Jogger

4-pocket, drawcord waistband mid-rise, with double cargo pocket and pen slot
 Sizes: *XXS - 5XL, I: 29"*
XXSP - XLP, I: 27"
XST - XLT, I: 31"
 Leg Opening: 4.5"
 Color shown: 39 Teal

Knit Accents Content:
 88% Polyester/12% Spandex



- 01 Black G
- 08 New Royal G
- 10 White G
- 18 Pewter G
- 37 Hunter G
- 39 Teal G
- 40 Ciel G
- 41 Navy G
- 65 Wine G
- 230 Khaki G
- 328 Bahama G
- 471 Moonstruck G
- 503 Galaxy G
-
- 1277 Eggplant 7/1
- 1295 True Red G
- 2301 Vibrance Pink G
- 2409 Light Jade 7/1

SK201 Reliance Pant

3-pocket, flat front with tape tie, branded, inside logo plush elastic waistband, cargo pocket
 Sizes: *XXS - 5XL, I: 31.5"*
XXSP - 2XLP, I: 29.5"
XXST - XLT, I: 33.5"
 Leg Opening: 8.5"
 Color shown: 65 Wine



- 01 Black G
- 08 New Royal G
- 10 White G
- 18 Pewter G
- 37 Hunter G
- 39 Teal G
- 40 Ciel G
- 41 Navy G
- 65 Wine G
- 230 Khaki G
- 328 Bahama G
- 471 Moonstruck G
- 503 Galaxy G
- 1276 New Grape G
- 1277 Eggplant G
- 1295 True Red G
- 2301 Vibrance Pink G
- 2409 Light Jade 7/1

SK202 Breeze Pant

3-pocket, logo plush elastic waistband, cargo pocket
 Sizes: *XXS - 5XL, I: 31.5"*
XXSP - 2XLP, I: 29.5"
XXST - XLT, I: 33.5"
 Leg Opening: 7.75"
 Color shown: 08 New Royal



- 01 Black G
- 08 New Royal G
- 10 White G
- 18 Pewter G
- 37 Hunter G
- 39 Teal G
- 40 Ciel G
- 41 Navy G
- 65 Wine G
- 230 Khaki G
- 328 Bahama G
-
- 503 Galaxy G
- 1276 New Grape G
- 1277 Eggplant G
- 1295 True Red G
-

SKP623 Gamma Pant

6-pocket, encased elastic waistband with drawcord, trouser front pockets, double cargo pocket, back patch pockets, forward leg seam, hem vent with logo tape, tapered leg pant
 Sizes: *XXS - 5XL, I: 30"*
XXSP - XLP, I: 28"
XST - XLT, I: 32"
 Leg Opening: 7"
 Color shown: 41 Navy



- 01 Black G
- 08 New Royal G
- 10 White G
- 18 Pewter G
- 37 Hunter 7/1
-
- 40 Ciel G
- 41 Navy G
- 65 Wine G
-
- 328 Bahama G
-
-
-
-
- 2301 Vibrance Pink 7/1

All Styles Main Fabric
 54% Polyester/40% Recycled Polyester/6% Spandex

✦ NOT SOLD ON AMAZON

G denotes colors supported for Groups



SKT193 Thesis Top

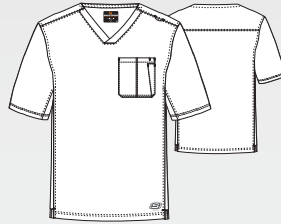
3-pocket, rounded neckline, jersey knit neck band, badge loop, inset chest pocket with pen slot, waist patch pockets, high-low hem top
 Sizes: XS - 5XL CB: 29.5"
 Color shown: 10 White



01 Black	
08 New Royal	
10 White	
18 Pewter	
37 Hunter	7/1
41 Navy	
328 Bahama	

SK0112 Structure Top

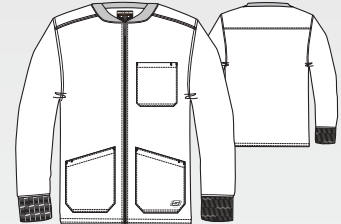
1-pocket, crossover V-neck top with chest pocket, full running side step-cut side vent detail
 Sizes: XS - 5XL, CB: 29.5"
 Color shown: 471 Moonstruck



01 Black	G
08 New Royal	G
10 White	G
18 Pewter	G
37 Hunter	G
39 Teal	G
40 Ciel	G
41 Navy	G
65 Wine	G
230 Khaki	G
328 Bahama	G
471 Moonstruck	G
503 Galaxy	G
1276 New Grape	G
1277 Eggplant	G
1295 True Red	G

SK0408 Structure Warm-Up

3-pocket, rib collar and cuffs, with zip front closure
 Sizes: XS - 5XL, CB: 30"
 Color shown: 41 Navy



01 Black	G
08 New Royal	G
10 White	G
18 Pewter	G
37 Hunter	G
39 Teal	G
40 Ciel	G
41 Navy	G
65 Wine	G
230 Khaki	G
328 Bahama	G
471 Moonstruck	G
503 Galaxy	G
1276 New Grape	G
1277 Eggplant	G
1295 True Red	G

Seamless Cuff:
 80% Polyester/20% spandex knit
 Dyed-to-match Zippers

All Styles Main Fabric
 54% Polyester/40% Recycled Polyester/6% Spandex

❖ NOT SOLD ON AMAZON

G denotes colors supported for Groups



SKP572 Structure Jogger

3-pocket, self full encased elastic waistband with drawcord, front fly, velcro closure single patch cargo pocket, rib cuff jogger

Sizes: XS - 3XL, I: 29"

SS - XLS, I: 27"

Leg Opening: 4.5"

Color shown: 40 Ciel

Knit Accents Content:
94% Polyester/6% Spandex



01 Black	
08 New Royal	
18 Pewter	
37 Hunter	7/1
40 Ciel	
41 Navy	
65 Wine	
328 Bahama	

SK0215 Structure Pant

4-pocket, full elastic waistband drawcord, inseam gusset, cargo pocket

Sizes: XS - 5XL, I: 32"

XSS - XLS, I: 30"

ST - XLT, I: 34"

Leg Opening: 8.5"

Color shown: 37 Hunter



01 Black	G
08 New Royal	G
10 White	G
18 Pewter	G
37 Hunter	G
39 Teal	G
40 Ciel	G
41 Navy	G
65 Wine	G
230 Khaki	G
328 Bahama	G
471 Moonstruck	G
503 Galaxy	G
1276 New Grape	G
1277 Eggplant	G
1295 True Red	G

All Styles Main Fabric

54% Polyester/40% Recycled Polyester/6% Spandex

NOT SOLD ON AMAZON

G denotes colors supported for Groups



BOBS

from Skechers.

When you purchase BOBS, a donation will be made to Petco Love to help save the lives of dogs and cats.



If you've ever shared your life with a pet, you know that love changes everything. Love is why we've teamed up with Petco Love to help create a better world for pets. When you purchase this product, a donation will be made to help save the lives of dogs and cats.



Eco-Friendly Fabric



THE COMFORT TECHNOLOGY COMPANY™





SKT021-YLVR

Yarn Lover *New*

3-pocket, virtual V-neck, shaped hem, detailed cover stitching

Sizes: XS - 5XL

CB: 25.5"

Coordinating colors:

01 Black	10 White
41 Navy	230 Khaki
471 Moonstruck	2409 Light Jade

SKT021-PPTY

Pet Party *New*

3-pocket, virtual V-neck, shaped hem, detailed cover stitching

Sizes: XS - 5XL

CB: 25.5"

Coordinating colors:

01 Black	10 White
230 Khaki	2409 Light Jade
2301 Vibrance Pink	

All Styles Main Fabric

54% Polyester

40% Recycled Polyester

6% Spandex

❖ NOT SOLD ON AMAZON



Eco-Friendly Fabric

New
FALL
Color

2358 Maple Red

GREY'S ANATOMY™

abc signature

© ABC Signature

PROFESSIONAL WEAR
BY BARCO

+ **SPANDEX STRETCH**

PRIMARY FABRIC CONTENT

74% Polyester | 23% Rayon | 3% Spandex Twill



GRST230
Avery Top **NEW**



GRSP526
Serena Pant



GRSP537
Eden Jogger



GRST136
Capri Top

GRST230 Avery Top NEW
 2-pocket, banded collar, notch sleeve, angled waist pockets, back yoke, relaxed-fit top
 Sizes: *XXS - 5XL, CB: 26"*
 Color shown: 2358 Maple Red

GRST136 Capri Top
 2-pocket, hourglass V-neck, front and back princess seams, chest and sleeve welt pockets, rib knit center back panel, high-low hem
 Sizes: *XXS - 3XL, CB: 25.5"*
 Color shown: 23 Indigo

Knit Accent Content:
 94% Polyester / 6% Spandex

GRST045 Serena Top
 3-pocket, ribbed V-neck, PDA pocket, logo tape side slit detail, rib knit back insets with princess seam, straight hem
 Sizes: *XXS - 3XL, CB: 25.5"*
 Color shown: 2301 Vibrance Pink

Knit Accent Content:
 94% Polyester / 6% Spandex

GRST124 Carly Top
 3-pocket, sport neck, rib knit front and back panels, exposed zipper pocket, shirt tail hem
 Sizes: *XXS - 3XL, CB: 25.5"*
 Color shown: 40 Ciel

Knit Accent Content:
 94% Polyester / 6% Spandex

GRST001 Kim Top
 3-pocket, V-neck surplice with front and back princess seams, zip front pocket
 Sizes: *XXS - 5XL, CB: 26"*
 Color shown: 312 Olive



ANTIMICROBIAL

ANTIMICROBIAL

ANTIMICROBIAL

ANTIMICROBIAL

01 Black
08 New Royal
23 Indigo
37 Hunter
40 Ciel
65 Wine
312 Olive
328 Bahama
512 Brilliance
905 Steel
2358 Maple Red 7/1

01 Black
08 New Royal
10 White
23 Indigo
37 Hunter
40 Ciel
65 Wine
312 Olive
328 Bahama
512 Brilliance
905 Steel
2358 Maple Red 7/1

01 Black
08 New Royal
10 White
23 Indigo
37 Hunter
39 Teal
40 Ciel
65 Wine
312 Olive
328 Bahama
471 Moonstruck
512 Brilliance
600 Scarlet
905 Steel
2301 Vibrance Pink

01 Black
08 New Royal
10 White
23 Indigo
37 Hunter
39 Teal
40 Ciel
65 Wine
312 Olive
328 Bahama
512 Brilliance
600 Scarlet
905 Steel

01 Black
08 New Royal
10 White
23 Indigo
37 Hunter
39 Teal
40 Ciel
65 Wine
312 Olive
328 Bahama
512 Brilliance
600 Scarlet
905 Steel
1277 Eggplant

All Styles Main Fabric
 74% Polyester/23% Rayon/3% Spandex twill

❖ NOT SOLD ON AMAZON

G denotes colors supported for Groups



GVST028 Bree Tuck-In Top
 1-pocket, knit V-neck with light grey badge loop and shaped high-low hem
 Sizes: XS - 3XL, CB: 25.5"
 Color shown: 471 Moonstruck

Knit Accent Content:
 88% Polyester / 12% Spandex



GRST011 Emma Top
 4-pocket, V-neck with angled seams
 Sizes: XXS - 5XL, CB: 26"
 Color shown: 39 Teal



GRSW017 Millie Warm-Up
 3-pocket, rib neck, zip front placket, PDA and zip pocket, princess seamed front, back seams and ribbed cuff
 Sizes: XS - 3XL, CB: 26"
 Color shown: 2301 Vibrance Pink

Knit Accent Content:
 94% Polyester / 6% Spandex



GRSW873 Gianna Warm-Up
 5-pocket, round neck, zip front, PDA and zipper pocket, rib back panel, rib cuff warm-up
 Sizes: XXS - 5XL, CB: 25.5"
 Color shown: 328 Bahama

Knit Accent Content:
 94% Polyester / 6% Spandex



ANTIMICROBIAL

01 Black	G
08 New Royal	G
10 White	G
23 Indigo	G
37 Hunter	G
39 Teal	G
40 Ciel	G
65 Wine	G
312 Olive	G
328 Bahama	G
471 Moonstruck	G
503 Galaxy	G
905 Steel	G
2301 Vibrance Pink	

01 Black	G
08 New Royal	G
10 White	G
23 Indigo	G
37 Hunter	G
39 Teal	G
40 Ciel	G
65 Wine	G
312 Olive	G
328 Bahama	G
471 Moonstruck	G
503 Galaxy	G
600 Scarlet	
905 Steel	G
1277 Eggplant	
2301 Vibrance Pink	
2358 Maple Red	7/1

01 Black	G
08 New Royal	G
10 White	G
23 Indigo	G
37 Hunter	G
39 Teal	G
40 Ciel	G
65 Wine	G
312 Olive	G
328 Bahama	G
471 Moonstruck	G
503 Galaxy	G
600 Scarlet	
905 Steel	G
2301 Vibrance Pink	

01 Black	G
08 New Royal	G
10 White	G
23 Indigo	G
37 Hunter	G
39 Teal	G
40 Ciel	G
65 Wine	G
312 Olive	G
328 Bahama	G
471 Moonstruck	G
600 Scarlet	
905 Steel	G

G denotes colors supported for Groups

❖ NOT SOLD ON AMAZON

All Styles Main Fabric
 74% Polyester / 23% Rayon / 3% Spandex twill



GRSP526 Serena Pant

7-pocket, duchess knit waistband with drawcord, mid-rise, patch pockets, double cargo, slit hem, logo tape detail tapered leg

Sizes: XXS - 3XL, I: 30"
 XSP - XLP, I: 28"
 XST - XLT, I: 32"
 Leg Opening: 6.5"
 Color shown: 905 Steel

Knit Accents Content:
 88% Polyester / 12% Spandex



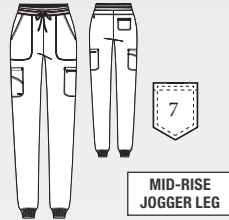
MID-RISE
TAPERED LEG

GRSP527 Carly Jogger

7-pocket, rib trim waistband, mid-rise, front slant pockets, double cargo pocket, zipper PDA, rib knit cuff jogger

Sizes: XXS - 3XL, I: 29"
 XSP - XLP, I: 27"
 XST - XLT, I: 31"
 Leg Opening: 4.25"
 Color shown: 39 Teal

Knit Accents Content:
 94% Polyester / 6% Spandex



MID-RISE
JOGGER LEG

GRSP537 Eden Jogger

5-pocket, knit rib drawcord waistband, zipper front pockets, double single cargo, ribbed cuff jogger

Sizes: XXS - 3XL, I: 29"
 XXSP - 2XLP, I: 27"
 XST - XLT, I: 31"
 Leg Opening: 4.25"
 Color shown: 312 Olive

Knit Accents Content:
 94% Polyester / 6% Spandex



MID-RISE
JOGGER LEG

GRSP500 Kim Pant

3-pocket, logo plush elastic back waistband, zip cargo pocket

Sizes: XXS - 5XL, I: 31"
 XXSP - 2XLP, I: 29"
 XXST - XLT, I: 33.5"
 Leg Opening: 7.75"
 Color shown: 600 Scarlet

Knit Accents Content:
 88% Polyester / 12% Spandex



MID-RISE
STRAIGHT LEG

ANTIMICROBIAL

01 Black	
08 New Royal	
10 White	
23 Indigo	
37 Hunter	
39 Teal	
40 Ciel	
65 Wine	
312 Olive	
328 Bahama	
471 Moonstruck	
512 Brilliance	
600 Scarlet	
905 Steel	
2301 Vibrance Pink	
2358 Maple Red	7/1

ANTIMICROBIAL

01 Black	G
08 New Royal	G
10 White	G
23 Indigo	G
37 Hunter	G
39 Teal	G
40 Ciel	G
65 Wine	G
312 Olive	G
328 Bahama	G
471 Moonstruck	
512 Brilliance	
600 Scarlet	
905 Steel	G
2301 Vibrance Pink	
2358 Maple Red	7/1

01 Black	G
08 New Royal	G
10 White	G
23 Indigo	G
37 Hunter	G
39 Teal	G
40 Ciel	G
65 Wine	G
312 Olive	G
328 Bahama	G
471 Moonstruck	G
503 Galaxy	G
905 Steel	G
2301 Vibrance Pink	
2358 Maple Red	7/1

01 Black	G
08 New Royal	G
10 White	G
23 Indigo	G
37 Hunter	G
39 Teal	G
40 Ciel	G
65 Wine	G
312 Olive	G
328 Bahama	G
471 Moonstruck	G
503 Galaxy	G
600 Scarlet	
905 Steel	G
1277 Eggplant	
2301 Vibrance Pink	

All Styles Main Fabric
 74% Polyester / 23% Rayon / 3% Spandex twill

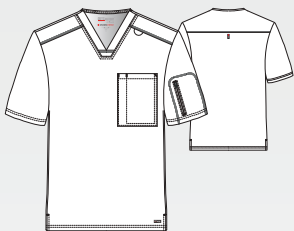
NOT SOLD ON AMAZON

G denotes colors supported for Groups



GRST079 Murphy Top

2-pocket, V-neck shaped chest pocket, zipper sleeve pocket top
 Sizes: XS - 5XL, CB: 29"
 Color shown: 23 Indigo

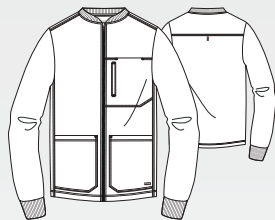


ANTIMICROBIAL

01 Black	G
08 New Royal	G
10 White	G
23 Indigo	G
37 Hunter	G
39 Teal	G
40 Ciel	G
65 Wine	G
312 Olive	G
328 Bahama	G
471 Moonstruck	G
503 Galaxy	G
905 Steel	G
2358 Maple Red	7/1

GRSW871 React Warm-Up

5-pocket knit stand collar with zipper front, chest patch, zipper welt pocket, chin guard, and knit cuff warm-up
 Sizes: XS - 5XL, CB: 29"
 Color shown: 905 Steel



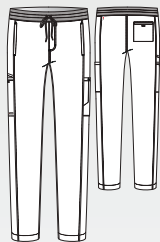
Knit Accents Content:
 94% Polyester / 6% Spandex

ANTIMICROBIAL

01 Black	G
08 New Royal	G
10 White	G
23 Indigo	G
37 Hunter	G
39 Teal	G
40 Ciel	G
65 Wine	G
312 Olive	G
328 Bahama	G
471 Moonstruck	G
503 Galaxy	G
905 Steel	G
2358 Maple Red	7/1

GRSP617 Hudson Pant

6-pocket, rib knit with plush elastic embedded waistband, two-tone drawcord, front zipper fly, on-seam front pockets, side leg panel with top entry cargo pockets, welt back pocket, slim straight pant
 Sizes: XS - 5XL, I: 32"
 XSS - 2XLS, I: 30"
 XST - 2XLT, I: 34"
 Leg Opening: 7.5"
 Color shown: 01 Black



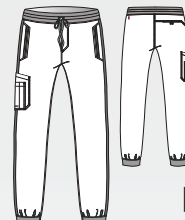
STRAIGHT LEG

ANTIMICROBIAL

01 Black	G
08 New Royal	G
10 White	G
23 Indigo	G
37 Hunter	G
39 Teal	G
40 Ciel	G
65 Wine	G
312 Olive	7/1
328 Bahama	G
471 Moonstruck	G
503 Galaxy	G
905 Steel	G
2358 Maple Red	7/1

GRSP550 Murphy Jogger

5-pocket, rib knit with plush elastic embedded waistband, two-tone drawcord, front zipper fly, zipper front pockets, angled single double cargo pocket, single back pocket, rib knit cuff jogger
 Sizes: XS - 5XL, I: 29"
 XSS - 2XLS, I: 27"
 XST - XLT, I: 31"
 Leg Opening 5.25"
 Color shown: 40 Ciel
 Knit Accents Content:
 94% Polyester / 6% Spandex



JOGGER LEG

ANTIMICROBIAL

01 Black	G
08 New Royal	G
10 White	G
23 Indigo	G
37 Hunter	G
39 Teal	G
40 Ciel	G
65 Wine	G
312 Olive	G
328 Bahama	G
471 Moonstruck	G
503 Galaxy	G
905 Steel	G
2358 Maple Red	7/1

G denotes colors supported for Groups

❖ NOT SOLD ON AMAZON

All Styles Main Fabric
 74% Polyester / 23% Rayon / 3% Spandex twill



TWO-TONE COLLECTION

GRST194 Meredith Top

4-pocket, banded two-tone V-neck, front and back princess seams, top-entry waist pockets, hidden zipper waist pocket, shirt tail hem top

Sizes: *XXS - 3XL, CB: 25.5"*

Color shown: *23 Indigo*



01 Black

08 New Royal

23 Indigo

GRSV845 Cristina Vest

2-pocket, rib knit neck band and side panels, diamond quilted body, badge loop, zipper waist pockets, zip-front vest

Sizes: *XXS - 3XL, CB: 26"*

Color shown:

2353 Black Two-Tone



2353 Black Two-Tone



GRSP639 Amelia Jogger

5-pocket, two-tone waistband with drawcord, mid-rise, flap cargo pockets, patch back pocket, rib knit cuff jogger

Sizes: *XXS - 3XL, I: 29"*

XSP - XLP, I: 27"

Leg Opening: *4.25"*

Color shown: *08 New Royal*



01 Black

08 New Royal

23 Indigo

Fabric Content

Fabric (solid) - 74% Polyester / 23% Rayon / 3% Spandex twill

Fabric (two-tone) - 64% Polyester / 33% Rayon / 3% Spandex

❖ NOT SOLD ON AMAZON

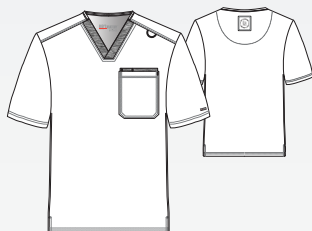


GRST204 Ethan Top

2-pocket, two-tone banded V-neck, double chest pocket, straight hem top

Sizes: XS - 3XL, CB: 29"

Color shown: 08 New Royal



01 Black

08 New Royal

23 Indigo

GRSW892 Lucas Warm-Up

4-pocket rib knit neck band, two-tone sleeves, waist flap pockets, sleeve patch pockets with zipper, rib knit cuffs and waistband, zip-front warm-up

Sizes: XS - 3XL, CB: 29"

Color shown:

2353 Black Two-Tone



2353 Black Two-Tone



GRSP641 Nathan Pant

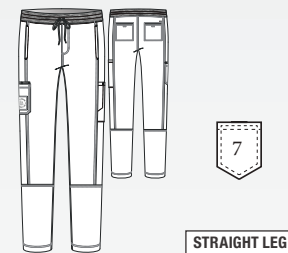
7-pocket, two-tone waistband with drawcord, on-seam front pockets, patch cargo pockets, welt back pockets with velcro closure, slim straight pant

Sizes: XS - 3XL, I: 32"

XSS - XLS, I: 30"

Leg Opening: 7.5"

Color shown: 08 New Royal



STRAIGHT LEG

01 Black

08 New Royal

23 Indigo

❖ NOT SOLD ON AMAZON

Fabric Content

Fabric (solid) - 74% Polyester / 23% Rayon / 3% Spandex twill

Fabric (two-tone) - 64% Polyester / 33% Rayon / 3% Spandex



GREY'S ANATOMY™ BY BARCO + SPANDEX STRETCH

New
FALL
Prints





GRST154-PLGR
Palm Garden NEW

4-pocket, shaped V-neck with angled pockets and shoulder seams

Sizes: XS - 5XL, CB: 26"

Coordinating colors:

01 Black	10 White
39 Teal	600 Scarlet
2358 Maple Red	

New
FALL
 Prints



GRST207-ANSC
Animal Scents NEW

4-pocket, V-neck seamed sleeve top

Sizes: XS - 5XL, CB: 25.5"

Coordinating colors:

01 Black	08 New Royal
10 White	2301 Vibrance Pink

❖ NOT SOLD ON AMAZON

GREY'S ANATOMY™
 PROFESSIONAL WEAR
 BY BARCO

abc signature
 ©ABC Signature

+ SPANDEXSTRETCH

All Styles Main Fabric
 50% Polyester
 43% Recycled Polyester
 7% Spandex

GREY'S ANATOMY™ BY BARCO + SPANDEX STRETCH



GREY'S ANATOMY™

abc signature

© ABC Signature

PROFESSIONAL WEAR
BY BARCO

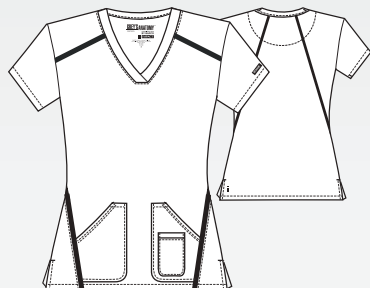
iMPACT

PRIMARY FABRIC CONTENT

74% Polyester | 23% Rayon | 3% Spandex Twill

7188 Elevate Top

3-pocket, crossover V-neck with Barco Tape® detailing at front and back seaming, including 2 patch pockets with utility pocket
 Sizes: XXS - 3XL, CB: 25.5"
 Color shown: 905 Steel

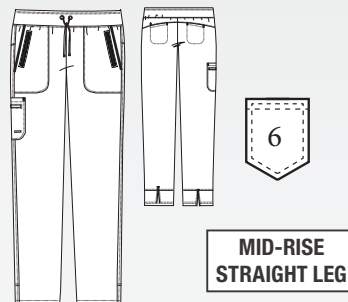


01 Black
08 New Royal
23 Indigo
40 Ciel
65 Wine
312 Olive
328 Bahama
905 Steel

7228 Elevate Pant

6-pocket, mid-rise straight leg cargo with hidden welt pocket, knit comfort elastic waistband, grommet eyes with titanium colored tipped ties, back vents at hem and Barco Tape® detailing
 Sizes: XXS - 3XL, I: 31.5"
 XXSP - XLP, I: 29.5"
 XXST - XLT, I: 33.5"
 Leg Opening: 7.375"
 Color shown: 65 Wine

Knit Accent Content:
 88% Polyester / 12% Spandex



01 Black
08 New Royal
23 Indigo
40 Ciel
65 Wine
312 Olive
328 Bahama
905 Steel

❖ NOT SOLD ON AMAZON

All Styles Main Fabric
 74% Polyester / 23% Rayon / 3% Spandex



New FALL Color

2069 Vivid Lapis

GREY'S ANATOMY™

abc signature
© ABC Signature

PROFESSIONAL WEAR
BY BARCO

EVOLVESTRETCH

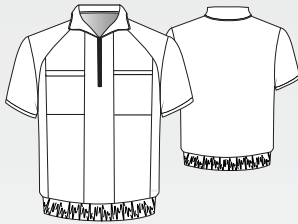
PRIMARY FABRIC CONTENT

48% CiCLO® Polyester | 44% Recycled Polyester | 8% Spandex



GSST215 Perseverance Top NEW

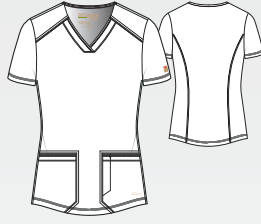
2-pocket zip-neck with collar, top-entry chest pockets, banded waist top
 Sizes: XXS - 3XL, CB: 23"
 Color shown: 2069 Vivid Lapis



01 Black	
23 Indigo	
2069 Vivid Lapis	7/1

GSST180 Rhythm Top

2-pocket, V-neck with piped edge finish, inset waist pockets, pen pocket
 Sizes: XXS - 5XL, CB: 25.5"
 Color shown: 2348 Fern



01 Black	G
08 New Royal	G
10 White	G
23 Indigo	G
37 Hunter	7/1
39 Teal	7/1
40 Ciel	G
65 Wine	G
328 Bahama	G
905 Steel	G
1276 New Grape	7/1
2069 Vivid Lapis	7/1
2314 Driftwood	
2348 Fern	G

GSST181 Sway Top

1-pocket, banded V-neck, badge loop, chest patch pocket, high-low step hem, tuck-in
 Sizes: XXS - 5XL, CB: 25.5"
 Color shown: 39 Teal



01 Black	G
08 New Royal	G
10 White	G
23 Indigo	G
37 Hunter	7/1
39 Teal	7/1
40 Ciel	G
65 Wine	G
328 Bahama	G
905 Steel	G
1276 New Grape	7/1
2069 Vivid Lapis	7/1
2314 Driftwood	
2348 Fern	G

GSSW886 Virtue Warm-Up

3-pocket, banded collar, badge loop, zip-front, side-entry waist pockets warm-up
 Sizes: XXS - 5XL, CB: 26"
 Color shown: 1276 New Grape



01 Black	G
08 New Royal	G
10 White	G
23 Indigo	G
37 Hunter	7/1
39 Teal	7/1
40 Ciel	G
65 Wine	G
328 Bahama	G
905 Steel	G
1276 New Grape	7/1
2348 Fern	G

G denotes colors supported for Groups

All Styles Main Fabric
 48% CÍCLO Polyester / 44% Recycled Polyester / 8% Spandex

NOT SOLD ON AMAZON



GSSP627 Cosmo Pant

6-pocket, encased elastic waistband with inner drawcord, mid-rise, side panels with angled welt and patch cargo pocket, tapered leg pant

Sizes: *XXS - 5XL, I: 30"*
XSP - 2XLP, I: 28"
XST - XLT, I: 32"
 Leg Opening: 7"
 Color shown:
 2314 Driftwood



MID-RISE
TAPERED LEG

01 Black	G
08 New Royal	G
10 White	G
23 Indigo	G
37 Hunter	7/1
39 Teal	7/1
40 Ciel	G
65 Wine	G
328 Bahama	G
905 Steel	G
1276 New Grape	7/1
2069 Vivid Lapis	7/1
2314 Driftwood	
2348 Fern	G

GSSP625 Terra Jogger

6-pocket, encased elastic waistband with drawcord, mid-rise, front pockets with piped edge finish, double cargo pocket, elastic cuff jogger

Sizes: *XXS - 5XL, I: 29"*
XSP - 2XLP, I: 27"
XST - XLT, I: 31"
 Leg Opening: 4.75"
 Color shown: 37 Hunter



MID-RISE
JOGGER LEG

01 Black	G
08 New Royal	G
10 White	G
23 Indigo	G
37 Hunter	7/1
39 Teal	7/1
40 Ciel	G
65 Wine	G
328 Bahama	G
905 Steel	G
1276 New Grape	7/1
2069 Vivid Lapis	7/1
2314 Driftwood	
2348 Fern	G

GSSP651 Flight Pant NEW

5-pocket knit back waistband with inside drawcord, high-rise, slanted front pockets, top-entry cargo and back pockets, knit back leg cuff, tapered leg pant

Sizes: *XXS - 3XL, I: 29"*
XSP - 2XLP, I: 27"
XST - XLT, I: 31"
 Leg Opening: 6.25"
 Color shown: 2069 Vivid Lapis



HIGH-RISE
TAPERED LEG

01 Black	
23 Indigo	
2069 Vivid Lapis	7/1

G denotes colors supported for Groups

All Styles Main Fabric

48% CÍCLO Polyester / 44% Recycled Polyester / 8% Spandex

NOT SOLD ON AMAZON

CÍCLO
 FUNCTIONAL. SENSIBLE. SUSTAINABLE.

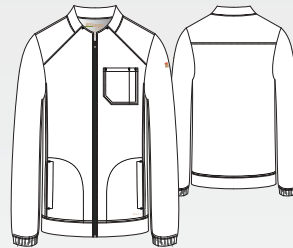


GSST179 Journey Top
 1-pocket, V-neck with piped edge finish, badge loop, inset chest pocket, high-low hem with notched side seam top
Sizes: XS - 5XL, CB: 29"
Color shown: 2348 Fern



01 Black	G
08 New Royal	G
10 White	G
23 Indigo	G
37 Hunter	7/1
39 Teal	7/1
40 Ciel	G
65 Wine	G
328 Bahama	G
905 Steel	G
1276 New Grape	7/1
2314 Driftwood	
2348 Fern	G

GSSW887 Cycle Warm-Up
 3-pocket, banded collar, zip-front, chest patch pocket with pen slot, side-entry waist pockets warm-up
Sizes: XS - 5XL, CB: 29"
Color shown: 23 Indigo



01 Black	G
08 New Royal	G
10 White	G
23 Indigo	G
37 Hunter	7/1
39 Teal	7/1
40 Ciel	G
65 Wine	G
328 Bahama	G
905 Steel	G
1276 New Grape	7/1
[Diagonal Stripes]	

G denotes colors supported for Groups

All Styles Main Fabric
 48% CiCLO Polyester / 44% Recycled Polyester / 8% Spandex

❖ NOT SOLD ON AMAZON



GSSP649 Highland Pant

5-pocket, textured plush elastic waistband with two-way drawcord, on-seam front pockets with shadow top stitching, inset cargo pocket with pen slot, inner thigh gusset, double back pocket slim straight pant

Sizes: XS - 5XL, I: 32"
 XSS - 2XLS, I: 30"
 XST - XLT, I: 34"
 Leg Opening: 7.5"
 Color shown: 10 White



01 Black	G
08 New Royal	G
10 White	G
23 Indigo	G
37 Hunter	7/1
39 Teal	7/1
40 Ciel	G
65 Wine	G
328 Bahama	G
905 Steel	G
1276 New Grape	7/1
2314 Driftwood	
2348 Fern	G

GSSP626 Voyager Jogger

5-pocket, encased elastic waistband with drawcord, front pockets with piped edge finish, patch cargo pocket, half back yoke with inset pocket, elastic cuff jogger

Sizes: XS - 5XL, I: 29"
 XSS - 2XLS, I: 27"
 XST - XLT, I: 31"
 Leg Opening: 5.25"
 Color shown: 65 Wine



01 Black	G
08 New Royal	G
10 White	G
23 Indigo	G
37 Hunter	7/1
39 Teal	7/1
40 Ciel	G
65 Wine	G
328 Bahama	G
905 Steel	G
1276 New Grape	7/1
2314 Driftwood	
2348 Fern	G

G denotes colors supported for Groups

All Styles Main Fabric
 48% CiCLO Polyester / 44% Recycled Polyester / 8% Spandex

❖ NOT SOLD ON AMAZON





GREY'S ANATOMY™

abc signature

© ABC Signature

PROFESSIONAL WEAR
BY BARCO

PRIMARY FABRIC CONTENT

77% Polyester | 23% Rayon

4153
Riley Top



4277
Mia Pant



GRP534
Kira Jogger



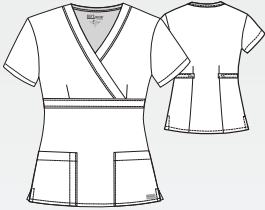
41423
Cora Top



4153 Riley Top

3-pocket, mock wrap with tab back

Sizes: XXS - 5XL, CB: 25"
Color shown: 23 Indigo

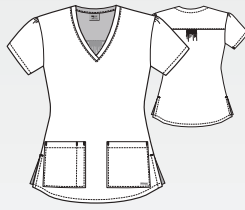


01 Black
08 New Royal
23 Indigo
37 Hunter
40 Ciel
905 Steel

71166 Aubrey Top

2-pocket, V-neck with pen slot and Shirred back yoke

Sizes: XS - 5XL, CB: 26"
Color shown: 37 Hunter



01 Black
08 New Royal
23 Indigo
37 Hunter
40 Ciel
65 Wine
600 Scarlet
905 Steel

41423 Cora Top

4-pocket, crossover V-neck with side panels, zipper pocket and tulip sleeve detail, fitted back

Sizes: XXS - 5XL, CB: 25.5"
Color shown: 328 Bahama



01 Black	G
08 New Royal	G
10 White	G
23 Indigo	G
37 Hunter	G
40 Ciel	G
65 Wine	G
328 Bahama	G
905 Steel	G

4450 Jamie Warm-Up

4-pocket, round neck warm-up with logo snaps and dyed-to-match knit cuffs with fitted back

Sizes: XS - 5XL, CB: 28"
Color shown: 65 Wine



Knit Accents Content:
100% Polyester

01 Black
08 New Royal
10 White
23 Indigo
37 Hunter
40 Ciel
65 Wine
328 Bahama
905 Steel

All Styles Main Fabric
77% Polyester/23% Rayon

G denotes colors supported for Groups

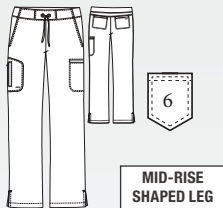


4277 Mia Pant

6-pocket, flat front, knit elastic back waistband with drawcord, double cargo, back pockets mid-rise

Sizes: *XXS - 5XL, I: 31.5"*
XXSP - 2XLP, I: 29.5"
XXST - XLT, I: 33.5"
 Leg Opening: 8.5"
 Color shown: 905 Steel

Knit Accents Content:
 88% Polyester/12% Spandex



GRP534 Kira Jogger

5-pocket, tunnel drawcord waistband, mid-rise, double cargo with zipper pocket, tailored side seam knit cuff jogger

Sizes: *XS - 3XL, I: 28"*
XSP - XLP, I: 26"
XST - XLT, I: 30"
 Leg Opening: 4.5"
 Color shown: 08 New Royal

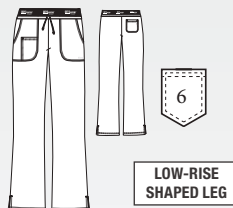
Knit Accents Content:
 94% Polyester / 6% Spandex



4275 Aubrey Pant

3-pocket, logo plush elastic waistband pant with drawcord

Sizes: *XXS - 5XL, I: 31"*
XXSP - XLP, I: 29"
XXST - XLT, I: 33"
 Leg Opening: 8.5"
 Color shown: 01 Black



4232 Riley Pant

5-pocket, tie front elastic back, mid-rise flare leg

Sizes: *XXS - 5XL, I: 31.5"*
XXSP - 2XLP, I: 29.5"
XXST - XLT, I: 33.5"
 Leg Opening: 10"
 Color shown: 40 Ciel



01 Black	G
08 New Royal	G
10 White	G
23 Indigo	G
37 Hunter	G
40 Ciel	G
65 Wine	G
328 Bahama	G
[Diagonal Stripes]	
905 Steel	G

01 Black	
08 New Royal	
10 White	
23 Indigo	
37 Hunter	
40 Ciel	
65 Wine	
328 Bahama	
[Diagonal Stripes]	
905 Steel	

01 Black	
08 New Royal	
[Diagonal Stripes]	
23 Indigo	
37 Hunter	
40 Ciel	
65 Wine	
328 Bahama	
[Diagonal Stripes]	
905 Steel	

01 Black	
08 New Royal	
[Diagonal Stripes]	
23 Indigo	
37 Hunter	
40 Ciel	
[Diagonal Stripes]	
905 Steel	

G denotes colors supported for Groups

All Styles Main Fabric
 77% Polyester/23% Rayon



GRT094 Lilah Maternity Top
 2-pocket, mock wrap empire line top with tie and fitted back
 Sizes: XS - 2XL, CB: 27"
 Color shown: 23 Indigo



GRP560 Lilah Maternity Pant
 1-pocket, knit maternity waistband with single cargo pocket pant
 Sizes: XS - 2XL, I: 31"
 Leg Opening: 8.625"
 Color shown: 905 Steel



All Styles Main Fabric
 77% Polyester/23% Rayon

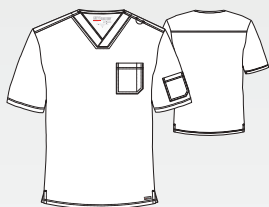
G denotes colors supported for Groups



GRT091 Evan Top

2-pocket, lapover V-neck, contrast badge loop at left shoulder, chest pocket with pen slot, single sleeve pocket with side vents

Sizes: XS - 5XL, CB: 29"
Color shown: 328 Bahama

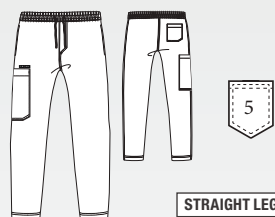


01 Black	G
08 New Royal	G
10 White	G
23 Indigo	G
37 Hunter	G
40 Ciel	G
65 Wine	G
328 Bahama	G
905 Steel	G

GRP558 Evan Pant

5-pocket, full elastic waistband with contrast drawcord, front zip fly, both side entry hand pockets, one right back patch pocket, and one single double left cargo pocket

Sizes: XS - 5XL, I: 32"
XST - XLT, I: 34"
XSS-XLS, I: 30"
Leg Opening: 8.5"
Color shown: 08 New Royal



01 Black	G
08 New Royal	G
10 White	G
23 Indigo	G
37 Hunter	G
40 Ciel	G
65 Wine	G
328 Bahama	G
905 Steel	G

G denotes colors supported for Groups

All Styles Main Fabric
77% Polyester / 23% Rayon



New
FALL
Color

2394 Ginger Rose

BARCO ONE
PERFORMANCE KNIT

BARCO[®]
one
heart • purpose • life

PRIMARY FABRIC CONTENT

80% Recycled Polyester | 20% Spandex



PERFORMANCE KNIT COLLECTION

BOT210 Engage Top 2-pocket, zip-neck with shirt collar, cuffed dolman sleeves, on-seam waist pockets, shirt tail hem top
Sizes: XXS - 5XL, CB: 26"
Color shown: 2394 Ginger Rose



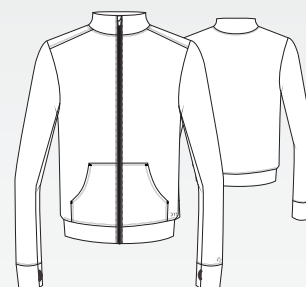
01 Black	
23 Indigo	
312 Olive	7/1
905 Steel	
2394 Ginger Rose	7/1

BOT209 Victory Top 2-pocket, banded V-neck with overlap, angled zipper waist pockets, straight hem top
Sizes: XXS - 5XL, CB: 25.5"
Color shown: 312 Olive



01 Black	
23 Indigo	
312 Olive	7/1
905 Steel	
2394 Ginger Rose	7/1

BOW896 Arena Warm-Up 2-pocket, banded collar, center front zipper, kangaroo-style waist pockets, self sleeve cuffs with thumb holes, warm-up
Sizes: XXS - 5XL, CB: 23"
Color shown: 905 Steel



01 Black	
23 Indigo	
[Diagonal Stripes]	
905 Steel	
[Diagonal Stripes]	

Performance Knit Fabric
80% Recycled Polyester/20% Spandex



BOP645 Sprint Pant

7-pocket, yoga-inspired waistband, high-rise, slanted front pockets, patch and zipper cargo pockets, on-seam back pockets, fit and flare pant

Sizes: *XXS - 5XL, I: 31.5"*

XXSP - XLP, I: 29.5"

XXST - XLT, I: 33.5"

Leg Opening: 10.5"

Color shown: 23 Indigo



01 Black	
23 Indigo	
312 Olive	7/1
905 Steel	
2394 Ginger Rose	7/1

BOP631 Pro Jogger

5-pocket, drawcord waistband, slanted front pockets, inset cargo pockets, clean back, self cuff jogger

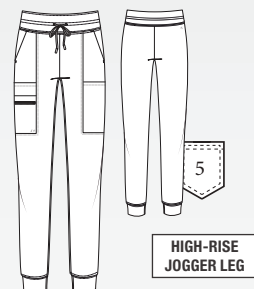
Sizes: *XXS - 5XL, I: 29"*

XXSP - XLP, I: 27"

XXST - XLT, I: 31"

Leg Opening: 4.375"

Color shown: 01 Black



01 Black	
23 Indigo	
312 Olive	7/1
905 Steel	
2394 Ginger Rose	7/1

Performance Knit Fabric
80% Recycled Polyester/20% Spandex



New FALL Color

2334 Helio Purple



BARCO[®]
one
heart • purpose • life

PRIMARY FABRIC CONTENT

50% Polyester | 43% Recycled Polyester | 7% Spandex



5105
Racer Top



BOP597
Uplift Pant



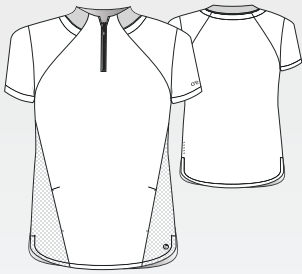
BOP513
Boost Jogger



BOT216
Flux Top **NEW**

BOT216 Flux Top **NEW**

2-pocket, knit banded collar with center front zipper, raglan seam detail, on-seam waist pockets, curved hem top
 Sizes: *XXS - 5XL, CB: 26"*
 Color shown: *2334 Helio Purple*



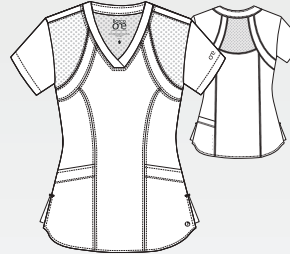
5106 Pulse Top

5-pocket, shaped V-neck with sporty seaming, perforated panels in front and back
 Sizes: *XXS - 5XL, CB: 25.5"*
 Color shown: *328 Bahama*



5105 Racer Top

4-pocket, V-neck with princess seaming and perforated panel details in front and back
 Sizes: *XXS - 5XL, CB: 25.5"*
 Color shown: *40 Ciel*



BOK804 Accelerate Underscrub

Women's round neck long sleeve underscrub top
 Sizes: *XXS - 5XL, CB: 25.5"*
 Color shown: *2330 Grey Heather*

Fabric Content:
 46% Recycled Polyester/
 42% Polyester/12% Spandex

PAIRS WELL WITH ALL BARCO BRANDS



01 Black	
08 New Royal	
23 Indigo	
[Diagonal Stripes]	
905 Steel	
2334 Helio Purple	
7/1	

01 Black	G
08 New Royal	G
23 Indigo	G
37 Hunter	G
39 Teal	G
40 Ciel	G
65 Wine	G
114 Cobalt	G
328 Bahama	G
905 Steel	G
[Diagonal Stripes]	

01 Black	G
08 New Royal	G
23 Indigo	G
37 Hunter	G
39 Teal	G
40 Ciel	G
65 Wine	G
114 Cobalt	G
328 Bahama	G
905 Steel	G
2334 Helio Purple	7/1

01 Black	10 White
2330 Grey Heather	2331 Indigo Heather

All Styles Main Fabric

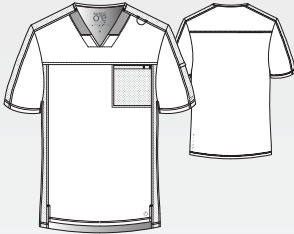
50% Polyester/43% Recycled Polyester/7% Spandex

G denotes colors supported for Groups



BOT195 Velocity Top

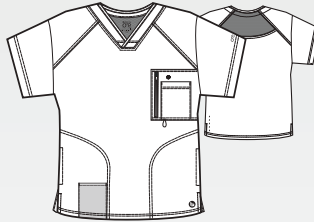
2-pocket V-neck with inset rib knit, badge loop, shoulder and sleeve panels, on-seam sleeve pocket, inset chest pocket with pen slot, high-low hem top
 Sizes: XS - 5XL, CB: 29.5"
 Color shown: 08 New Royal



01 Black	G
08 New Royal	G
23 Indigo	G
37 Hunter	7/1 G
39 Teal	7/1 G
40 Ciel	G
65 Wine	G
114 Cobalt	7/1 G
328 Bahama	G
905 Steel	G

0115 Men's Amplify Top

5-pocket V-neck with raglan sleeve details, hidden pocket and chest pocket with a secure zip media pocket
 Sizes: XS - 5XL, CB: 30"
 Color shown: 328 Bahama
 All zippers are black

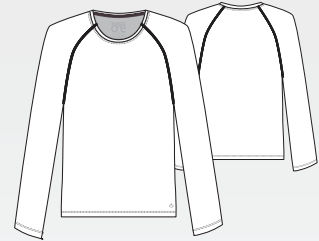


01 Black	G
08 New Royal	G
23 Indigo	G
37 Hunter	G
39 Teal	G
40 Ciel	G
65 Wine	G
114 Cobalt	G
328 Bahama	G
905 Steel	G

BOK803 Surge Underscrub

Men's round neck raglan long sleeve underscrub top
 Sizes: XS - 5XL, CB: 27.5"
 Color shown: 2331 Indigo Heather

Fabric Content:
 46% Recycled Polyester/
 42% Polyester/12% Spandex



PAIRS WELL WITH ALL BARCO BRANDS

01 Black	10 White
2330 Grey Heather	2331 Indigo Heather

All Styles Main Fabric

50% Polyester/43% Recycled Polyester/7% Spandex

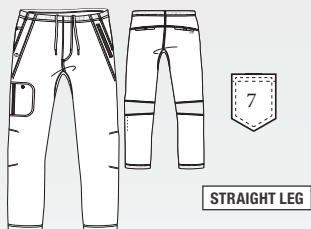
G denotes colors supported for Groups



0217 Men's Amplify Pant

7-pocket, elastic waist cargo with drawcord, back perforated knee panels and functional zip fly front with gusseted inseam

Sizes: XS - 5XL, I: 32"
 ST - XLT, I: 34"
 XSS - 3XLS, I: 30"
 Leg Opening: 7.5"
 Color shown: 65 Wine



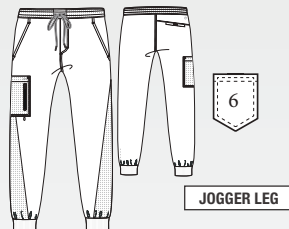
01 Black	G
08 New Royal	G
23 Indigo	G
37 Hunter	G
39 Teal	G
40 Ciel	G
65 Wine	G
114 Cobalt	G
328 Bahama	G
905 Steel	G

BOP520 Men's Vortex Jogger

6-pocket, drawcord full elastic waistband, single zip double cargo, inside coin pocket and perforated details jogger

Sizes: XS - 5XL, I: 30"
 ST - XLT, I: 32"
 XSS - 3XLS, I: 28"
 Leg Opening: 5.25"
 Color shown: 114 Cobalt

Knit Accents Content:
 94% Polyester/6% Spandex

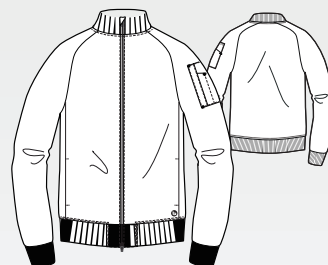


01 Black	G
08 New Royal	G
23 Indigo	G
37 Hunter	G
65 Wine	G
114 Cobalt	G
328 Bahama	G
905 Steel	G

BOW883 Amplify Warm-Up

3-pocket bomber, knit neck and knit cuffs on raglan sleeves, 2-way zipper with cover, secure zip closure shoulder pocket with pen slots warm-up

Sizes: XS - 5XL, CB: 28"
 Color shown: 23 Indigo



01 Black	G
23 Indigo	G

G denotes colors supported for Groups

All Styles Main Fabric
 50% Polyester/43% Recycled Polyester/7% Spandex



New
FALL
Prints



5107C-PRSL
Prismatic Lights **NEW**
4-pocket, V-neck with front
and back princess seams
Sizes: *XXS - 5XL*
CB: 25.5"

Coordinating colors:

01 Black

39 Teal

2334 Heli
Purple



5107-HEFL

Helio Flowers NEW

4-pocket, V-neck with front and back princess seams

Sizes: XXS - 5XL

CB: 25.5"

Coordinating colors:

2334 Helio Purple

5107-AZRW

Azure Waves NEW

4-pocket, V-neck with front and back princess seams

Sizes: XXS - 5XL

CB: 25.5"

Coordinating colors:

08 New Royal	10 White
23 Indigo	39 Teal
40 Ciel	

BARCO®
one
heart • purpose • life

All Styles Main Fabric
50% Polyester
43% Recycled Polyester
7% Spandex



BARCO
UNIFY 

PRIMARY FABRIC CONTENT

71% Polyester | 24% Rayon | 5% Spandex

BUT167
Purpose Top



BUP601
Purpose Pant



BUP647
Union Jogger



BUT163
Mission Top



BUT167 Purpose Top

4-pocket, V-neckline, shoulder contrast badge loop, zip pocket PDA, tool strip detail at front pockets

Sizes: *XXS-5XL, CB: 25.5"*
Color shown: 23 Indigo

BUT163 Mission Top

1-pocket, Henley style neckline, dyed-to-match button placket, welt chest pocket, straight hem, tuck in style top

Sizes: *XXS-5XL, CB: 26.5"*
Color shown: 40 Ciel

BUW884 Team Warm-Up

3-pocket low funnel neckline, princess seams, dyed-to-match zip placket, shoulder contrast badge loop, front pockets, welt sleeve PDA, back waist detail, rib cuff sleeves jacket

Sizes: *XS-5XL, CB: 26"*
Color shown: 10 White

BUP647 Union Jogger

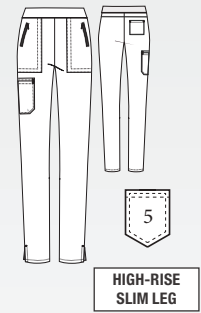
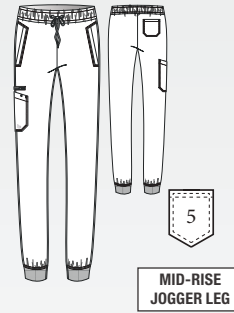
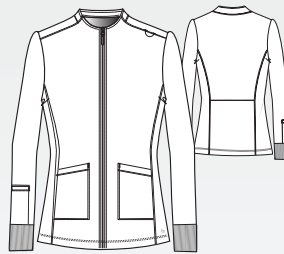
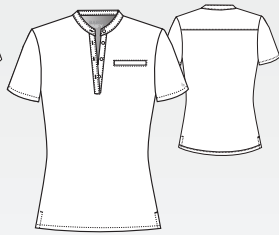
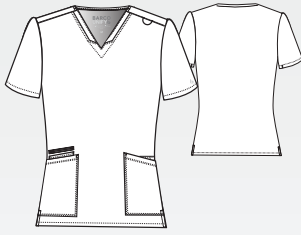
5-pocket, encased elastic waistband with drawcord, mid-rise, angled welt front pockets, double cargo pocket, back patch pocket, rib knit cuff jogger

Sizes: *XXS-5XL, I: 29"*
XXSP-XLP, I: 27"
ST-XLT, I: 31"
Leg Opening: 4.375"
Color shown: 65 Wine

BUP601 Purpose Pant

5-pocket, high-rise slim pant, flat front waistband with interior drawcord, dyed-to-match zip front pockets, double cargo PDA pocket, back pocket pant

Sizes: *XXS-5XL, I: 30.5"*
XXSP-XLP, I: 28.5"
ST-XLT, I: 32.5"
Leg Opening: 6.75"
Color shown: 328 Bahama



01 Black
08 New Royal
10 White
23 Indigo
40 Ciel
65 Wine
312 Olive
328 Bahama
905 Steel

01 Black
08 New Royal
10 White
23 Indigo
40 Ciel
65 Wine
312 Olive
328 Bahama
905 Steel

01 Black
08 New Royal
10 White
23 Indigo
40 Ciel
65 Wine
312 Olive
328 Bahama
905 Steel

01 Black
08 New Royal
10 White
23 Indigo
40 Ciel
65 Wine
328 Bahama
905 Steel

01 Black
08 New Royal
10 White
23 Indigo
40 Ciel
65 Wine
312 Olive
328 Bahama
905 Steel

All Styles Main Fabric

71% Polyester/24% Rayon/5% Spandex twill

❖ NOT SOLD ON AMAZON



BUT153 Rally Top

3-pocket, banded V-neck, shoulder contrast badge loop, dyed-to-match zip chest pocket and patch pocket with pen slots, sleeve pocket, straight hem top

Sizes: XS-5XL, CB: 29"
Color shown: 312 Olive



01 Black
08 New Royal
10 White
23 Indigo
40 Ciel
65 Wine
312 Olive
328 Bahama
905 Steel

BUW881 Rally Warm-Up

4-pocket, rib trimmed mock neck, dyed-to-match zip placket, hidden zip chest pockets, kanga-style front pockets, cuff sleeve jacket

Sizes: XS-5XL, CB: 29"
Color shown: 08 New Royal

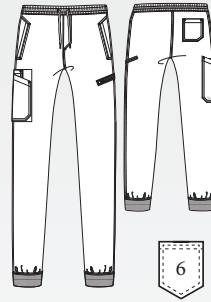


01 Black
08 New Royal
10 White
23 Indigo
40 Ciel
65 Wine
328 Bahama
905 Steel

BUP602 Rally Jogger

6-pocket elastic waistband with drawcord, front zip fly, L shaped welt pocket, double single cargo pocket with dyed-to-match zip pocket, back pocket, rib cuff jogger

Sizes: XS-5XL, I: 29"
SS-XLS, I: 27"
ST-XLT, I: 31"
Leg Opening: 4.75"
Color shown: 23 Indigo



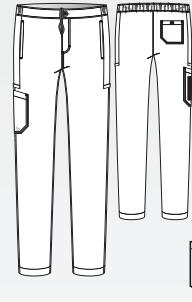
JOGGER LEG

01 Black
08 New Royal
10 White
23 Indigo
40 Ciel
65 Wine
312 Olive
328 Bahama
905 Steel

BUP628 Cruise Pant

7-pocket, button waistband with inside drawcord and encased elastic at back, zip fly, on-seam front pockets, side panels with angled welt cargo pockets, top entry patch cargo pocket with additional vertical zip pocket, back patch pocket with velcro closure, slim straight pant

Sizes: XS-5XL, I: 32"
SS-XLS, I: 30"
ST-XLT, I: 34"
Leg Opening: 7.25"
Color shown: 905 Steel



STRAIGHT LEG

01 Black
08 New Royal
10 White
23 Indigo
40 Ciel
65 Wine
328 Bahama
905 Steel

❖ NOT SOLD ON AMAZON

All Styles Main Fabric
71% Polyester/24% Rayon/5% Spandex twill



LAB COATS



 **BARCO**
SINCE 1929

BRC966 Grace **NEW**

GREY'S ANATOMY™
abc signature PROFESSIONAL WEAR
© ABC Signature BY BARCO

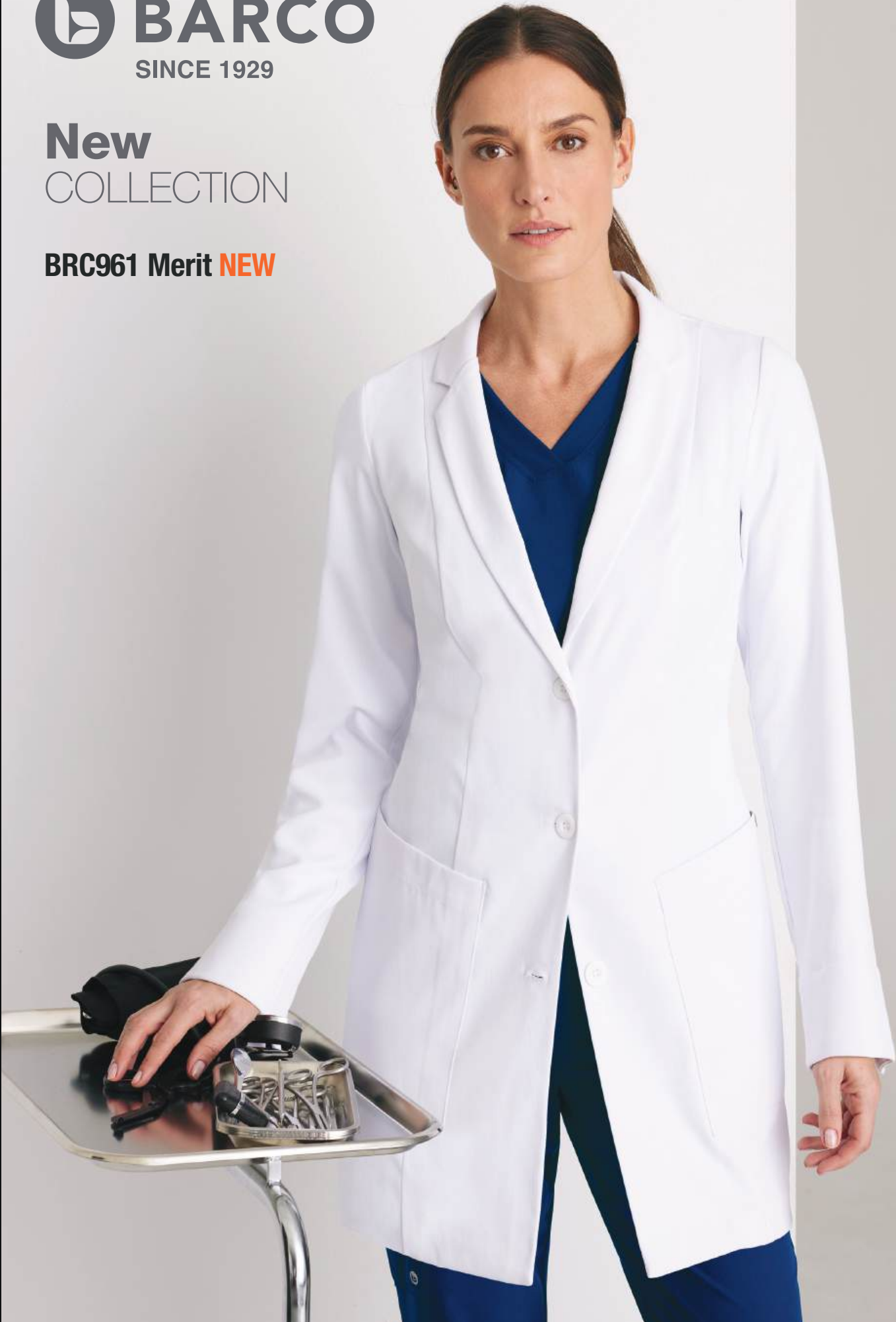
GRC962 Derek





New
COLLECTION

BRC961 Merit NEW





Soil
Release



Water
Resistance



Wrinkle
Release



UV
Protection

BRC961 Merit NEW

Women's 3-pocket long sleeve modern fit lab coat, notch lapel, front princess seams, top-entry tablet friendly waist pockets with interior pen slots, center back vent, sleeve cuffs with slits, and pocket label

Sizes: XXS-3XL

Length*: 30"

Sleeve length: 24.5"

Buttons: 3

BRC966 Grace NEW

Women's 3-pocket long sleeve modern fit lab coat, notch lapel, curved front princess seams, welt chest pocket, top-entry waist pockets, center back vent, sleeve vents, and pocket label.

Sizes: XXS-5XL

Length*: 35"

Sleeve length: 24.5"

Buttons: 3

BRC965 Verse NEW

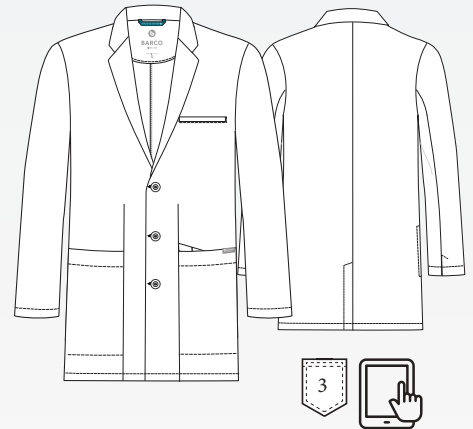
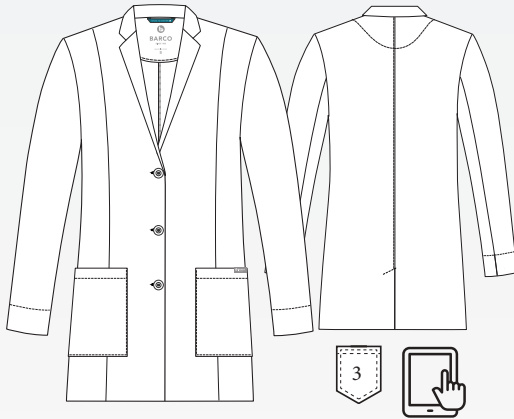
Men's 3-pocket long sleeve lab coat, notch lapel, welt chest pocket, tablet friendly top entry waist pockets with interior pen slots, center back vent, sleeve vents, side slits for pant access, and pocket label

Sizes: S-5XL

Length*: 38"

Sleeve length: 26"

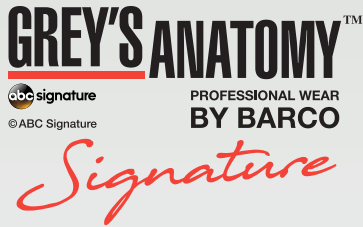
Buttons: 3



Fabric Content

100% Polyester





Soil Release



4-Way Stretch



Wrinkle Release



Super-Soft Touch

GNC960 Penelope

Women's 4-pocket long sleeve lab coat, notch lapel, angled front yoke with on-seam pocket and pen slots, half-circle front princess seams with curved on-seam tablet friendly pockets, and back princess seams with vents.
 Sizes: *XXS-5XL*
 Length: 35"
 Sleeve length: 24-25.25"
 Buttons: 4

2405 Brooke

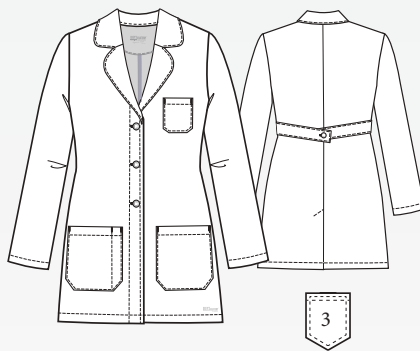
Women's 3-pocket long sleeve lab coat, round notch collar, 2 front pockets, 1 chest pocket, pen slot, and adjustable back belt.
 Sizes: *XXS-5XL*
 Length: 32"
 Sleeve length: 24.5"
 Buttons: 3

GNC001 Eve

Women's 2-pocket long sleeve lab coat, notch collar, front and back princess seams, double-lined, 2 front pockets and 2 back vents
 Sizes: *XS-3XL*
 Length: 34"
 Sleeve length: 24.5"
 Buttons: 3

2402 Morgan

Women's 2-pocket lab coat with 2 front tablet sized pockets, back sewn down belt, and front and back princess seams.
 Sizes: *XXS-3XL*
 Length: 35"
 Sleeve length: 24.5"
 Buttons: 3



Fabric Content

75% Polyester / 20% Rayon / 5% Spandex Twill
WITH 4-WAY STRETCH





Soil Release



Moisture Wicking



Easy Care



Super-Soft Touch

GRC962 Derek

Men's 6-pocket long sleeve notch lapel lab coat, welt chest pocket, tablet pocket, angled front body seams with top-entry waist pockets, angled welt hand pockets, angled back yoke seam, extended vent opening at the side seams, and vented sleeve opening with 2-button closure

GRC962L

Sizes: 36-48L, 50-56L
Length*: 39"
Sleeve length: 27.625-29.375"
Buttons: 3

0914 Noah

Men's 5-pocket lab coat with tablet pocket, inside larger pockets, chest pocket with pen slots center back French seam, and extra length vent.

Sizes: 32-56
Length: 37"
Sleeve length: 24.75"

0914L

Sizes: 36-48L, 50-56L
Length*: 41"
Sleeve length: 25.75"
Buttons: 4

4481 Lily

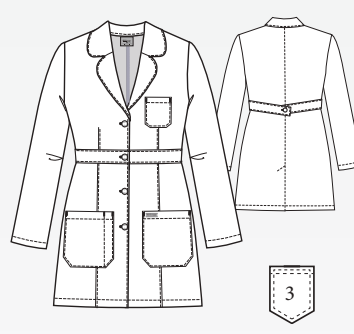
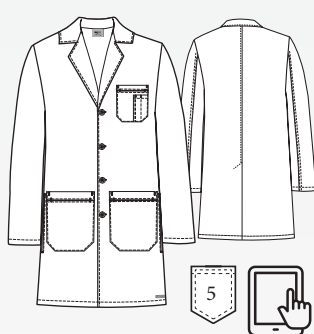
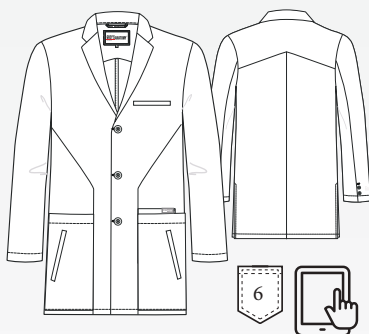
Women's 3-pocket lab coat with princess seamed front, updated rounded collar, inset belt, loose button back belt, and back vent.

Sizes: XS-5XL
Length: 34"
Sleeve length: 23.75"
Buttons: 4

7446 Hannah

Women's 2-pocket lab coat with waist seam, front and back tapered darts, and back vent.

Sizes: XXS-5XL
Length: 31.5"
Sleeve length: 23.5"
Buttons: 3



Fabric Content

80% Polyester / 20% Cotton Peached Twill





In honor of the healthcare professionals who go above and beyond to make a difference in our lives, Barco's Nightingales Foundation provides critical resources to children in need. Since 2020, our Foundation has focused its efforts on Haiti, which has the highest hunger rates in the Western hemisphere. Our two dedicated teams make monthly trips to remote villages near our 7 solar wells, traversing rough terrain to deliver food to 6,000 families in hard-to-reach, underserved areas.

Because of your continued support, we're unwavering in our mission to keep hope alive. Thank you for helping to make a difference.

BARCO[®]
Made to Matter

barcosnightingales.org